

# FENDT

## Fendt Cargo T955





## Fendt Cargo T955. All the best features in one.

It may seem all-new, but look closer and you'll see it's quintessential Fendt: introducing the Fendt Cargo T955. With its unique technology, the Cargo T offers you more comfort and performance than any other telehandler.



Unique details that make  
all the difference.

No more restricted views. The unique, high-speed and spring-loaded cab with full panoramic windscreen offers you an unrivalled view of every loading job.

### Transforming your daily work

The Fendt Cargo T955 goes where other telehandlers can't, and gives you a better overview, better performance, more safety and more comfort. The Fendt Cargo T955 is the first to combine the best features of a telehandler and a wheel loader, and is perfectly equipped with a range of clever details to meet any farming requirements:

- Unique, high-speed and vibration-dampened cab for perfect 360° all-round visibility and a unique view of the working tool
- Solid and durable construction for maximum reliability
- Strong telescopic arm with centring and lateral guidance
- Enormous breakaway torque of wheel loader proportions
- Small turning radius despite long wheelbase
- Powerful, stepless transmission
- Powerful hydraulics giving around 200 l/min
- 100% differential lock and levelling
- Large diesel tank



### Keep everything in sight

When we developed the Fendt Cargo T955, we prioritised visibility from the cab. The cab can be raised, reducing blind spots in every direction.

Impressively versatile,  
uncompromisingly reliable.

## CONCEPT

# New machine concept opens up new horizons.

Maximum panorama = maximum safety. The elevating cab not only gives you whole new angles of vision, it's the gateway to an entirely new machine concept – the Fendt Cargo T.

The Fendt Cargo T ventures where no conventional telehandler has dared to go. The cab, which you can raise to a sight level of 4.25 m, forms the cornerstone for the entire vehicle. The elevating cab and the ensuing machine concept means there are no holds barred when it comes to the stability of the telescopic arm, the attachment points of the lifting cylinder and the space in the engine compartment.

This telehandler is marked for its top quality, durability, lift capacity and breakaway torque; combining the benefits of a conventional telehandler with those of a same-weight wheel loader.

The wheel loader among the telehandlers



## CAB

# Unique cab for unparalleled all-round visibility.



### Best seat in the house

Just two steps and you're in the spacious cab of the Fendt Cargo T955, which sets new standards in the telehandler class. Use the foot pedal on the move to continuously raise the cab up to 4.25 m on the visual axis. This gives you a perfectly clear view to fill high-sided vehicles. The floor-to-ceiling safety glass windscreen also helps. Because of the slim steering column, there's nothing to obstruct your view. The hydraulic cylinder which lifts up the cab, is also equipped with a nitrogen bubble. This cushions the cab from impacts while driving, for an ultra-comfortable ride.

### Spacious cab with fully-loaded armrest

The spacious cab of the Fendt Cargo T955 offers plenty of space and is very bright with large windows. The operating armrest and joystick are installed on the standard suspension seat, so the suspension movements do not cause any proportional movements between the seat itself and the armrest.

The display elements are connected to the armrest and arranged in such a way that they form a line of sight with the right A-pillar. This does away with the usual extensive dashboard. You can control the engine with a start/stop button. Perfect if your work involves lots of short stops.

### Comfort first

The optional bucket-return function makes life much easier. It retracts the telescopic arm all the way in, while the tilting angle of the attachment moves to the pre-programmed position. With this option, all the driver has to do is control the height. The Fendt Cargo T can be equipped to preheat the engine. If your vehicle has this system you can use a 230V connection as well as the cab preheating function. This means you can use a portable heating system to heat the cab, for example. A comfortable start to the day is a good start to the day.

## LIFT ARM AND SWING ARM

# Strong components for a strong performance.



### Way out front, but not too far

The telescopic arm reaches from the front wheel to the centre of gravity of the pallet fork (max. 4350 mm). To prevent overload and the machine tipping forward, the Fendt Cargo T is equipped with an overload system. If a critical angle is reached, all functions that could put the machine in a dangerous position are locked.

### Extra strong and unique in shape

The telescopic arm has been designed to be extra strong and robust. Any torsion is counteracted with a 8-mm thick base body and a 10-mm thick arm. In addition, the telescopic arm is mounted centrally to best channel the resulting forces. Two-sided end position damping supports you in your work.

### Maximum precision with maximum comfort

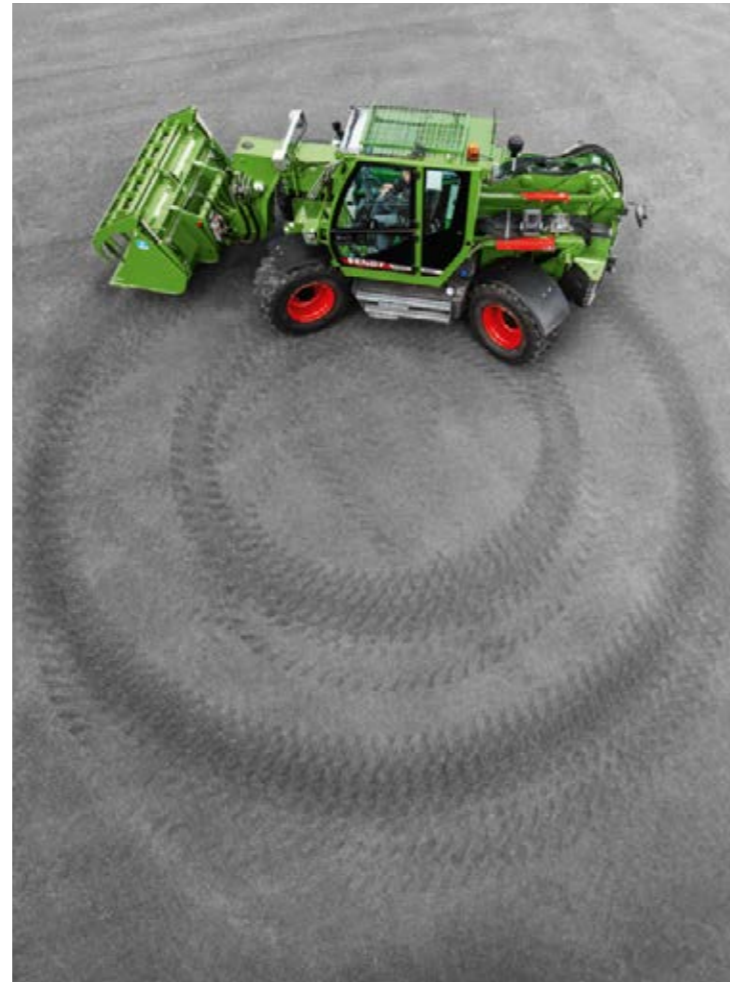
For maximum driving comfort, not only is the cab spring-loaded with a nitrogen bubble, but the telescopic arm can also be equipped with a load swing damping system. This effectively intercepts impacts even at high speeds. At a slow driving speed, the load swing damping system is blocked.

### Push not pull

The swing arm has Z-kinematics. This system uses the maximum force of the hydraulic cylinder. The pushing cylinder achieves a breakaway torque of up to 85 kN. This technology is adopted from the wheel loader and promises full power capacity from the telehandler.

## FRAME AND CHASSIS

# Hard-core to the last detail.



### Well thought-out through and through

The machine concept opens up new possibilities right down to the frame. You can use the added space to attach the lift cylinder to the very top of the frame. This ensures both optimum power delivery and a fully closed off area under the telescopic arm. There are no nooks or openings here, which prevents dirt from settling and endangering the components.

The telescopic arm itself is mounted exactly in the centre of the vehicle. This prevents torsion and damage from day one.

### Agile, stable and flexible

Depending on the tyres, the narrow chassis allows a turning radius of less than 4 m. Compact spaces are therefore no problem for the Fendt Cargo T. The rear axle is mounted at a free-swinging angle of 8° as standard, for permanent ground contact on the four powered wheels. You can opt for an automatic swing axle lock for the rear axle.

To meet special requirements, the Fendt Cargo T can be equipped with a levelling system for the front axle. With its 8° buffer, the vehicle can deliver maximum stability no matter how uneven the ground.

## ENGINE AND GEARBOX

# Power for maximum performance.



### Engine

The Fendt Cargo T features state-of-the-art engine and exhaust technologies. These sophisticated components still leave plenty of room in the engine compartment. The air can flow through perfectly, always preventing the Fendt Cargo T from overheating. To stop the air grilles and radiators from collecting dust, the vehicle can be equipped with a reversible fan.

### Stepless drive

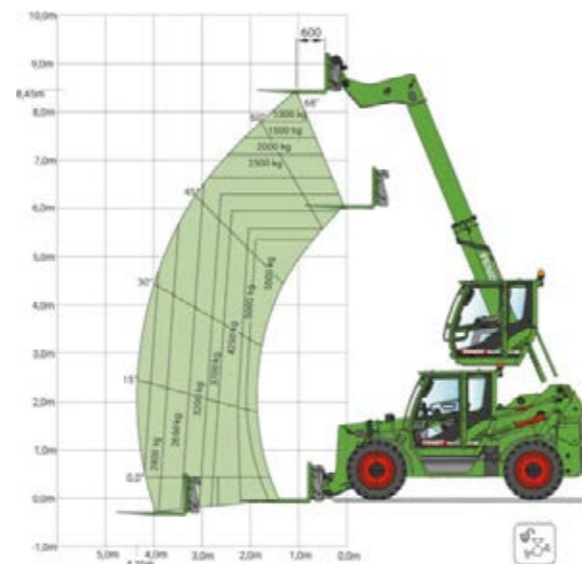
The stepless drive of the Fendt Cargo T955 consists of an axial piston adjustment pump, driven directly by the diesel engine. It detects the accelerator pedal position and swivels out depending on the diesel engine speed. Going by the swing angle, it sends hydraulic oil to the travel motor in the CompactDrive transmission, which, depending on the load, uses it to generate either a high speed (fast driving speed) or a lot of torque (driving on a slope or into crops). The vehicle has an inch/brake pedal. With this, the traction drive is disengaged from the engine speed. At low driving speeds, this provides more hydraulic power for the working hydraulics.

# Technical specifications.



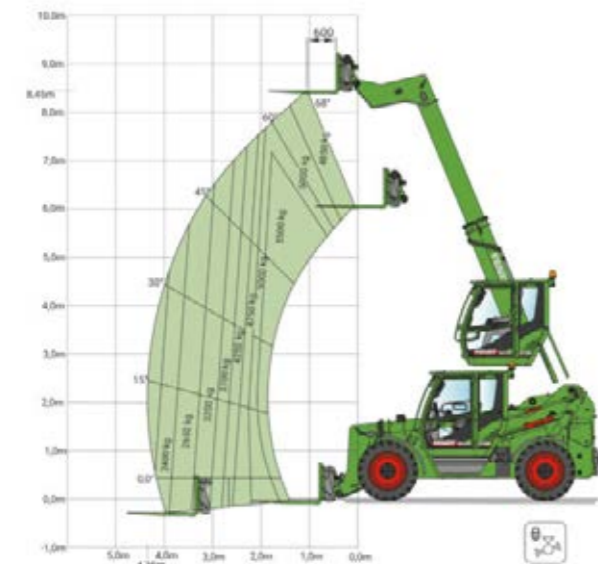
**Payload and working range**

Without hydraulic levelling / with swing axle lock  
Operation with bucket



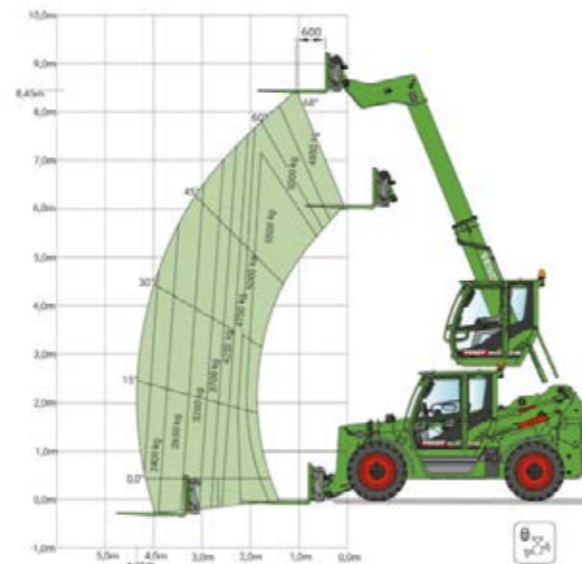
**Load capacity and working range**

Without hydraulic levelling / without swing axle lock  
Operation with lifting fork



**Load capacity and working range**

Without hydraulic levelling / with swing axle lock  
Operation with lifting fork



**Load capacity and working range**

With hydraulic levelling / with swing axle lock  
Operation with lifting fork

Performance characteristics		
Max. lift height	mm	8500
Max. load (LSP 600 mm)	kg	5500
Max. load at max. height	kg	4850
Max. load at max. outreach	kg	2400
Max. extension	mm	4350
Tractive power	kN	90
Breakaway torque on the bucket	kN	85

Engine		
Rated power ECE R 120	kW/hp	123/167
Maximum power ECE R 120	kW/hp	126/171
No. of cylinders	Number	4
Cubic capacity	cm <sup>3</sup>	4500
Rated speed	rpm	2200
Max. torque at 1200 rpm	Nm	763
Fuel level	litres	160.0
AdBlue level	litres	16.0

Transmission		
Transmission type		CompactDrive
Max. road speed, standard	km/h	20
Max. road speed, Option 1	km/h	30
Max. road speed, Option 2	km/h	40
Max. road speed, reverse	km/h	20 (30/40)

Hydraulics		
Powershift variable flow pump	l/min	200
Working pressure	bar	310
Flow capacity of auxiliary hydraulics 1 (on boom head)	l/min	100
Flow capacity of auxiliary hydraulics 2 (optional, at rear)	l/min	65
Flow capacity of auxiliary hydraulics 3 (optional, on boom head)	l/min	100

**CARGO T955**

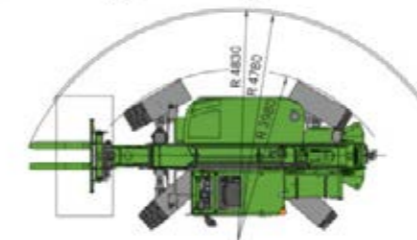
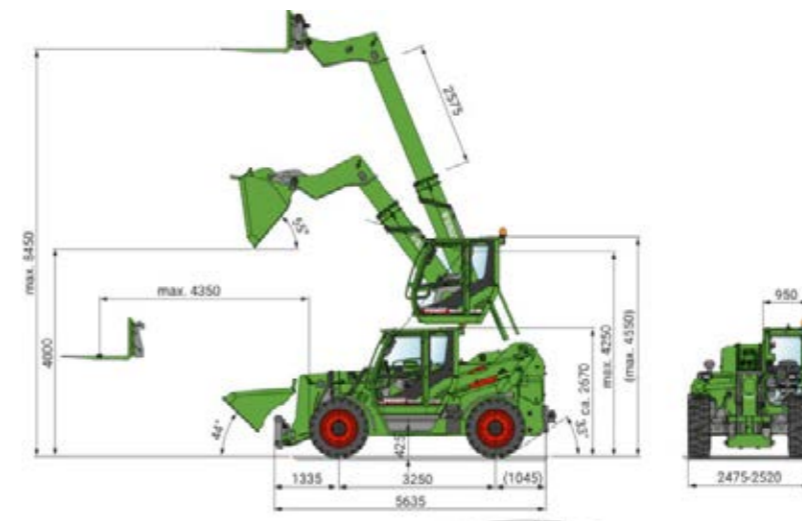
**CARGO T955**

Electrical features		
Batteries	Number	2
Battery power	Ah/V	105 / 24

Tyres		
Standard tyres		460/70 -24
1. Optional tyres		500/70 R24
2. Optional tyres		600/55 -26.5

Dimensions		
Overall length including tool carrier	mm	5635
Overall height, cab down	mm	2670
Overall height, cab up	mm	4550
Overall width with standard tyres	mm	2475
Overall width with max. tyres	mm	2750
Cab width	mm	950
Distance from middle of front axle to front of tool carrier	mm	1335
Distance from middle of rear axle to rear of machine	mm	1045
Max. ground clearance	mm	425
Wheelbase	mm	3250
Track width	mm	2050
Rear startup angle	°	33
Min. turning radius with standard tyres	m	3.98

Weights		
Unladen weight (standard equipment, full tanks, with driver)	kg	11800
Max. trailer load of towing hitch	kg	3000
Max. trailer load of towing hitch, height-adjustable (optional)	kg	15000



**Dimensions / turning radius in mm**



# FENDT

It's Fendt. Because we understand Agriculture.



[www.fendt.com](http://www.fendt.com)

AGCO GmbH – Fendt Marketing  
87616 Marktobendorf, Germany

 **AGCO**  
Your Agriculture Company

Fendt is a worldwide brand of AGCO.  
All details regarding scope of delivery, appearance, performance, dimensions and weights, fuel consumption and running costs of vehicles reflect the latest information available at the time of print. These may change by the time of purchase. Your Fendt dealer will be happy to inform you about any changes. The vehicles shown do not feature country-specific equipment.